



## Scottoil: Suzuki Freewind 650 (2000) Scottoil eSystem (the electronic Scottoil) Installation Guide



The Dispenser Assembly can be routed along the underside of the Swingarm using Dispenser Mounting Sleeves, Cable Ties & Glue or Self Adhesive Cable Clips. For further information see our easy step installation guide - [Dispenser Assemblies, General](#). The nib should feed the rear sprocket between the 6 & 7 o'clock positions, with the cut face facing outwards.

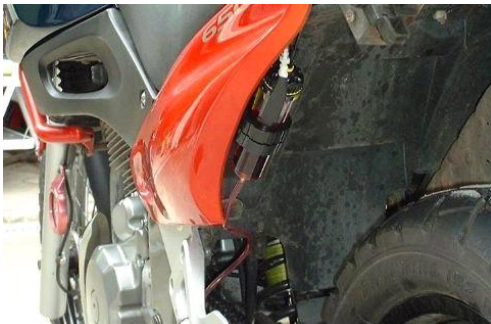
Connect the delivery tubing to the check valve but do not connect the check valve, part 6, to the REP, part 7, until you are priming the system.

See picture below left



The REP can be mounted visibly on the frame, or hidden behind the rear fairing. The REP can be orientated anywhere between horizontal and vertical, as long as the nozzle is inclined upwards. Remember to avoid exhaust and engine components and to keep the filling hole accessible. For further information, see our easy step installation guide – [Reservoir Positions, General](#).

See third picture



The Display Bracket, part 5, can be rotated through 360° to give 4 mounting options and can also be flipped to provide 4 further options. The bracket can be secured to any M5 / M6 bolt e.g. brake or clutch lever, brake cylinder or fairing mountings, in some cases you might need to trim the supplied bolt. It is possible to bend the bracket to shape, do so before fitting the Display Unit, part 1, to prevent damage to the unit. Alternatively, the Sticky Fastener, part 4, can be used to securely fasten the Display Unit to any flat surface e.g. the fork yokes.

See picture bottom left

Note: Picture shows a similar reservoir



Note: This is a generic image

Locate the bikes' battery and attach the red terminal from the display unit to the +ve terminal on the battery, and attach the black terminal to the -ve terminal of the battery. Take care when routing the wires, avoiding hot engine and exhaust components also avoiding moving parts such as the throttle linkages. Where possible follow existing wiring and secure using cable ties.

Once fitted, fill the REP and prime the pump, then connect the check valve to the REP and prime the delivery tubing following the instructions supplied with the kit. For further information, see the website [eSystem page](#) which includes the Setup and Installation Guide. Set the flow rate using the 'Driving Screen' on the Display Unit to 60-70 seconds per drop (s/dp), check the condition of your chain after a ride, and then adjust as required.

If you have any further comments or queries, and are unable to resolve them using our website, please do not hesitate to call technical on 0141 955 1100 or email [technical@scottoiler.com](mailto:technical@scottoiler.com) for assistance. Thank you.

Scottoil Ltd. 2 Riverside, Milngavie, Glasgow, G62 6PL Tel. 0141 955 1100 Fax. 0141 956 5896 [www.scottoiler.com](http://www.scottoiler.com)

